

- Medical aid station
- Branch office
- Resident stations
- Fire brigade facilities
- Hospitals
- Heliport
- Facilities for people in need of assistance during disasters
- Rainfall observation stations
- Water-level observatory
- River camera
- Underpasses
- Expressway
- National route
- Prefectural route
- Boundaries of town council (outline lines)
- District boundaries (outline lines)

- Sediment disaster warning area**
- Steep slope collapse
  - Warning area
  - Special warning area
  - Debris flow
  - Special warning area
  - Warning area
  - Landslide
  - Warning area

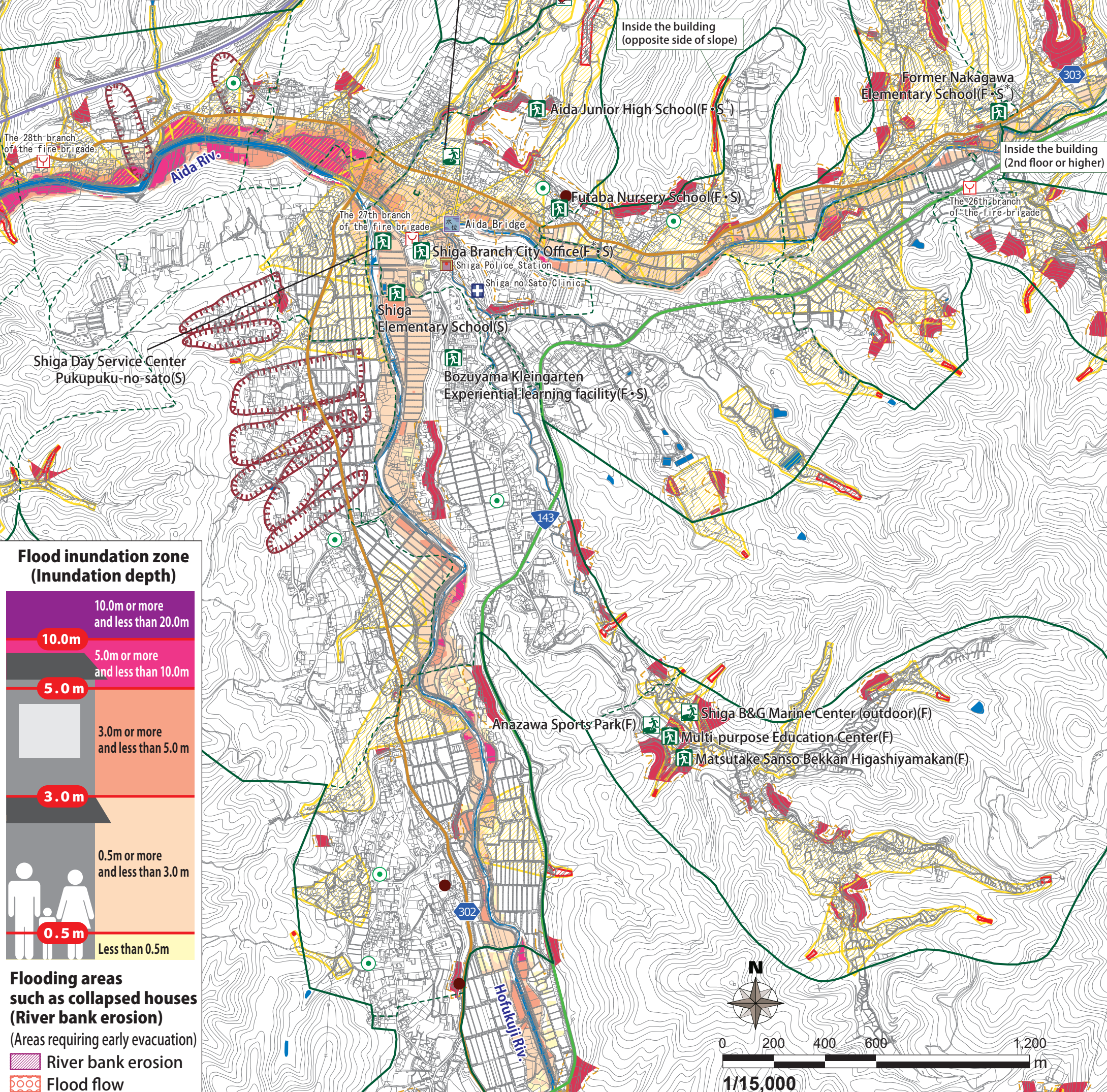
- Shelter-related legend**
- Designated evacuation shelter
  - Designated emergency evacuation sites
  - (F) Available during Flooding
    - \*...Second floor and above available
  - (S) Available in case of Sediment disaster
    - \*...Partially available

Note: Designation status is subject to change. Please check the city website for the latest information.

City website



この地図は、松本市長の承認を得て、松本市作成の松本市基本図 1/10,000 を複製したものである。  
(承認番号 令 5 松建都指令第 345 号)  
測量法に基づく国土地理院長承認 (使用) R 5JHs 499



- Flood inundation zone (Inundation depth)**
- 10.0m or more and less than 20.0m
  - 10.0m
  - 5.0m or more and less than 10.0m
  - 5.0m
  - 3.0m or more and less than 5.0m
  - 3.0m
  - 0.5m or more and less than 3.0m
  - 0.5m
  - Less than 0.5m
- Flooding areas such as collapsed houses (River bank erosion)**  
(Areas requiring early evacuation)
- River bank erosion
  - Flood flow