

Matsumoto City Hazard Map

Shelter-related legend

- Designated evacuation shelter
- Designated emergency evacuation sites
- (F) Available during Flooding
*...Second floor and above available
- (S) Available in case of Sediment disaster
*...Partially available

Note: Designation status is subject to change. Please check the city website for the latest information.

City website

Community centers and meeting places

Sediment disaster warning area

- Steep slope collapse

Warning area

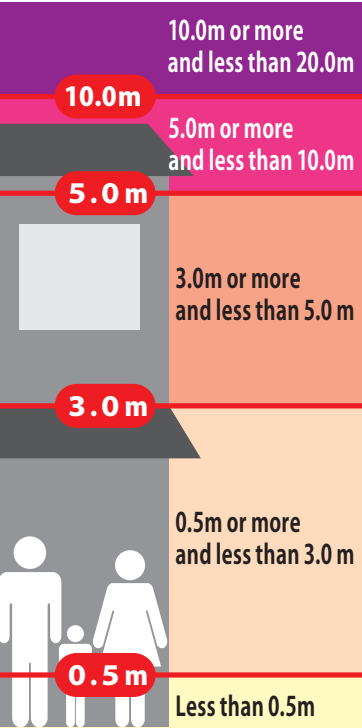
Special warning area
- Debris flow

Warning area

Special warning area
- Landslide

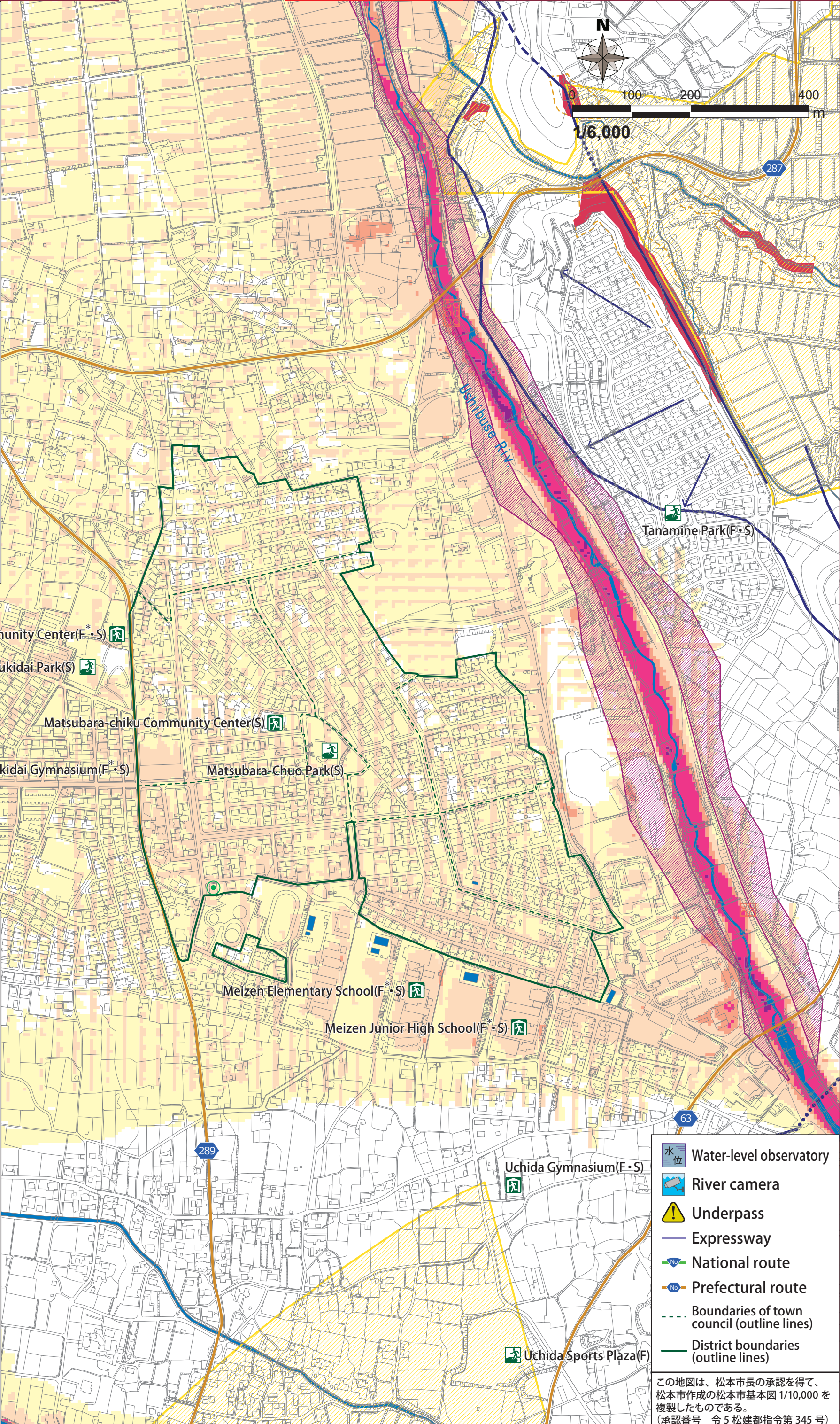
Warning area
- Active fault (reliable location)
- Active fault (reliable location)
- Active fault (location uncertain)
- Active Fault (Subsurface)
- Estimated active fault
- Flexural deformation

Flood inundation zone (Inundation depth)



Flooding areas such as collapsed houses (River bank erosion)

- (Areas requiring early evacuation)
- River bank erosion
- Flood flow



- Water-level observatory
- River camera
- Underpass
- Expressway
- National route
- Prefectural route
- Boundaries of town council (outline lines)
- District boundaries (outline lines)

この地図は、松本市長の承認を得て、松本市作成の松本市基本図 1/10,000 を複製したものである。
(承認番号 令 5 松建都指令第 345 号)