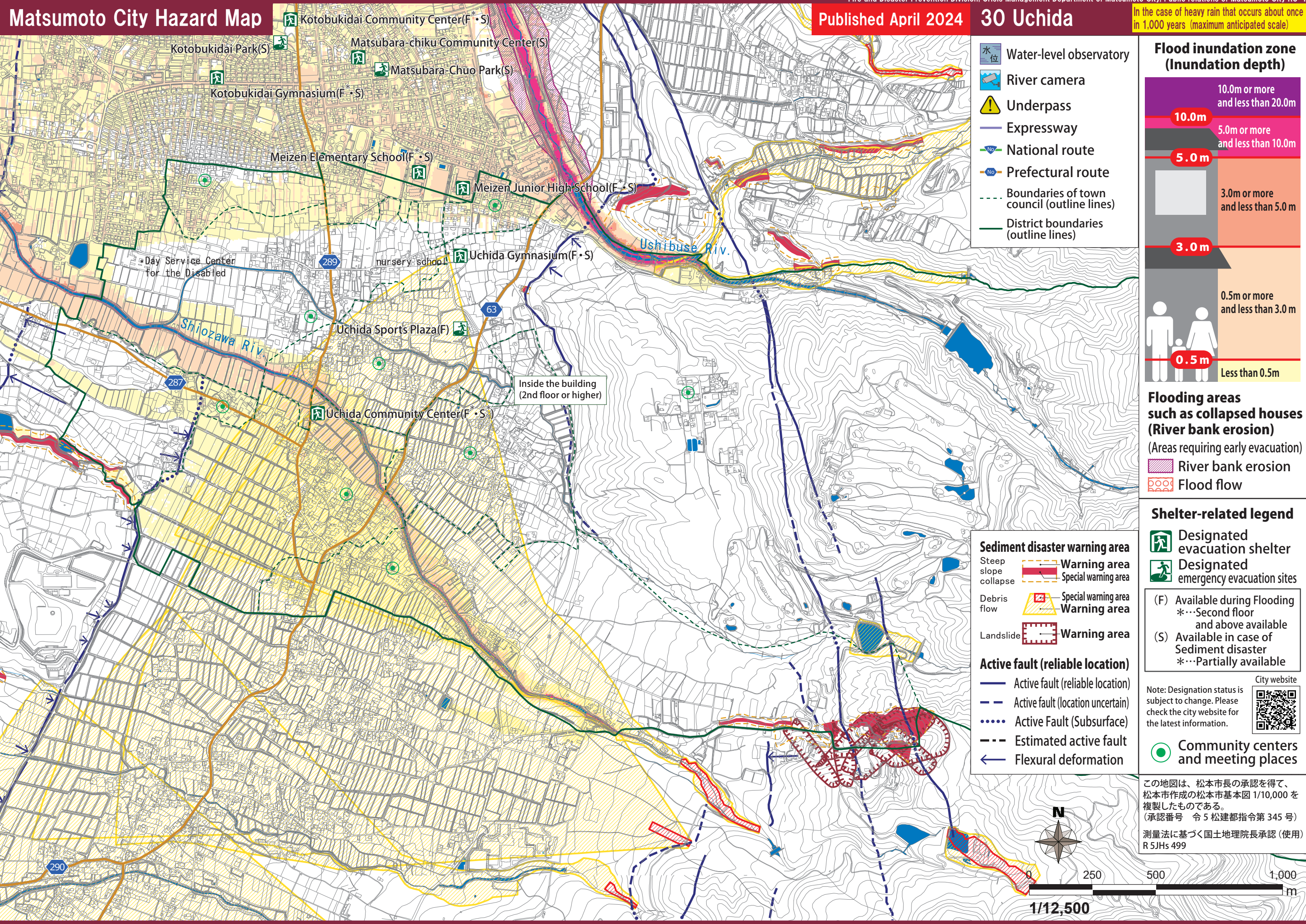


Matsumoto City Hazard Map

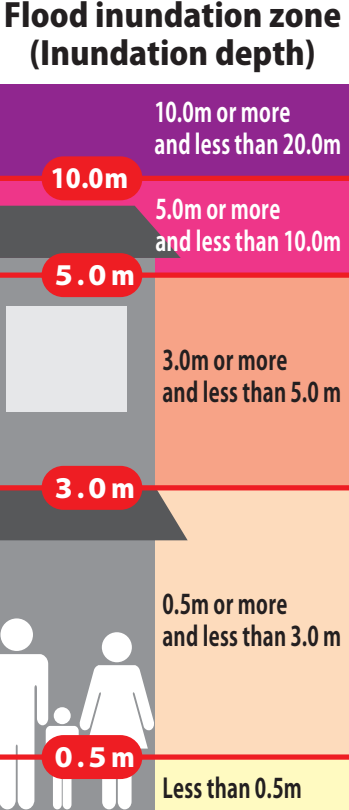
Published April 2024

30 Uchida

In the case of heavy rain that occurs about once in 1,000 years (maximum anticipated scale)



- Water-level observatory
- River camera
- Underpass
- Expressway
- National route
- Prefectural route
- Boundaries of town council (outline lines)
- District boundaries (outline lines)



Flooding areas such as collapsed houses (River bank erosion)

(Areas requiring early evacuation)

- River bank erosion
- Flood flow

- ### Sediment disaster warning area
- Steep slope collapse
 - Debris flow
 - Landslide
 - Warning area
 - Special warning area
 - Warning area
- ### Active fault (reliable location)
- Active fault (reliable location)
 - Active fault (location uncertain)
 - Active Fault (Subsurface)
 - Estimated active fault
 - Flexural deformation

- ### Shelter-related legend
- Designated evacuation shelter
 - Designated emergency evacuation sites
 - (F) Available during Flooding
 - *...Second floor and above available
 - (S) Available in case of Sediment disaster
 - *...Partially available

Note: Designation status is subject to change. Please check the city website for the latest information.

City website

この地図は、松本市長の承認を得て、松本市作成の松本市基本図 1/10,000 を複製したものである。(承認番号 令 5 松建都指令第 345 号)

測量法に基づく国土地理院長承認 (使用) R 5JHs 499

