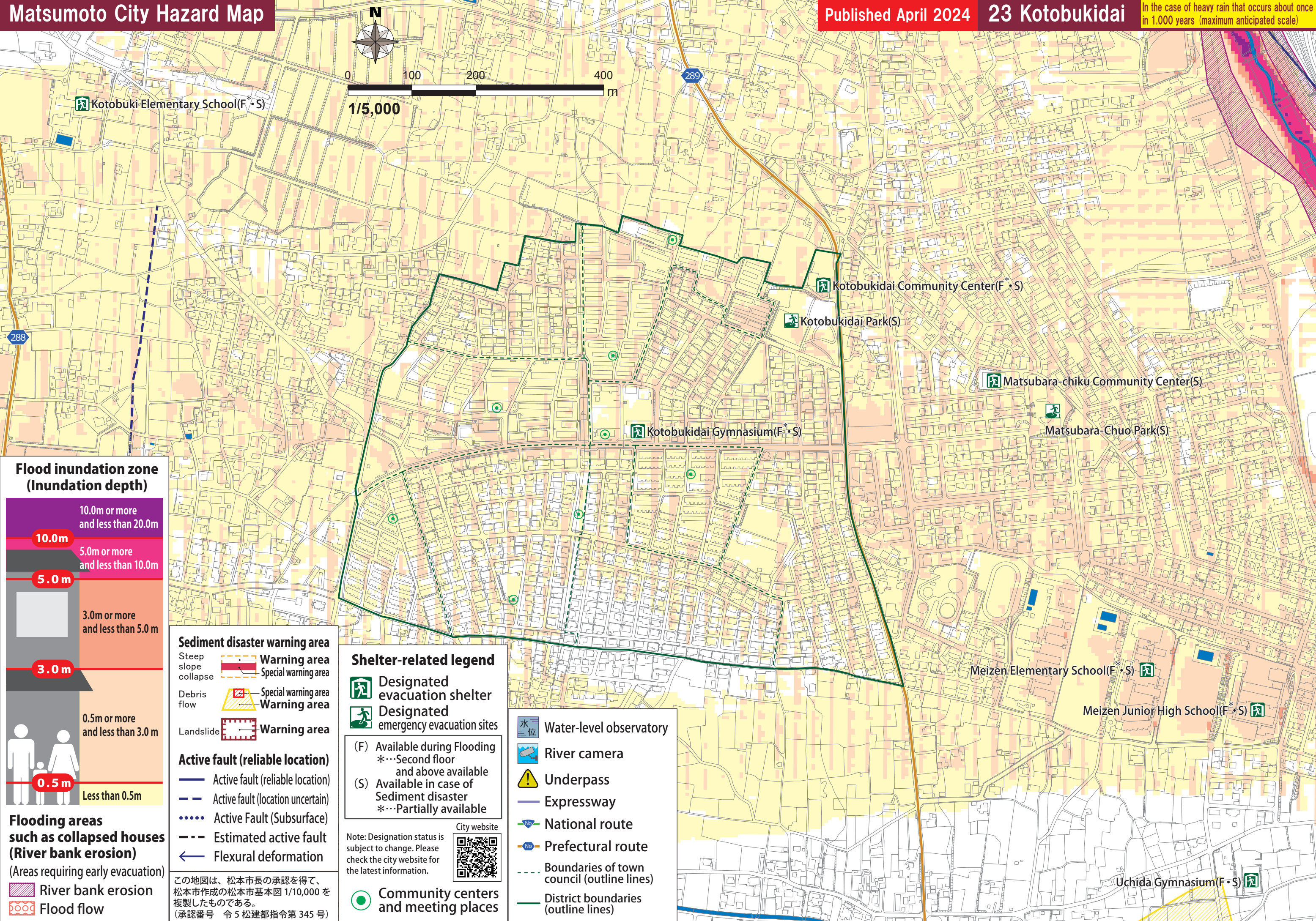


Matsumoto City Hazard Map

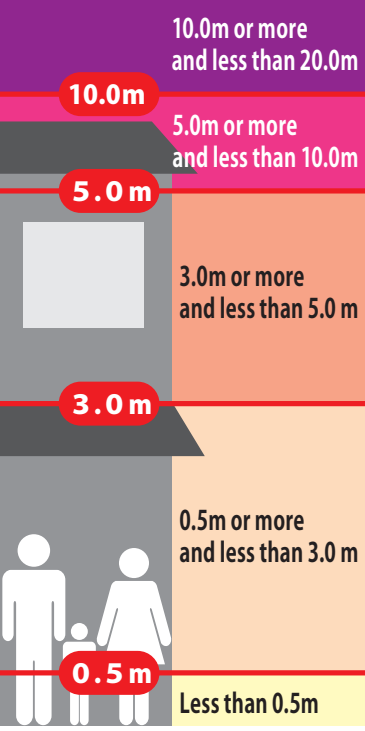
Published April 2024

23 Kotobukidai

In the case of heavy rain that occurs about once in 1,000 years (maximum anticipated scale)

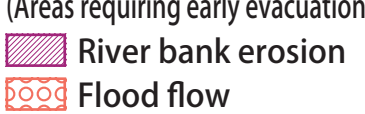


Flood inundation zone (Inundation depth)

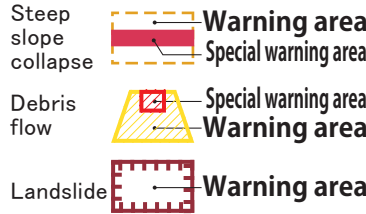


Flooding areas such as collapsed houses (River bank erosion)

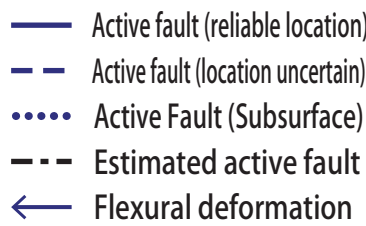
(Areas requiring early evacuation)



Sediment disaster warning area



Active fault (reliable location)



この地図は、松本市長の承認を得て、松本市作成の松本市基本図 1/10,000 を複製したものである。
(承認番号 令 5 松建都指令第 345 号)

Shelter-related legend



(F) Available during Flooding
*...Second floor and above available
(S) Available in case of Sediment disaster
*...Partially available

Note: Designation status is subject to change. Please check the city website for the latest information.

