

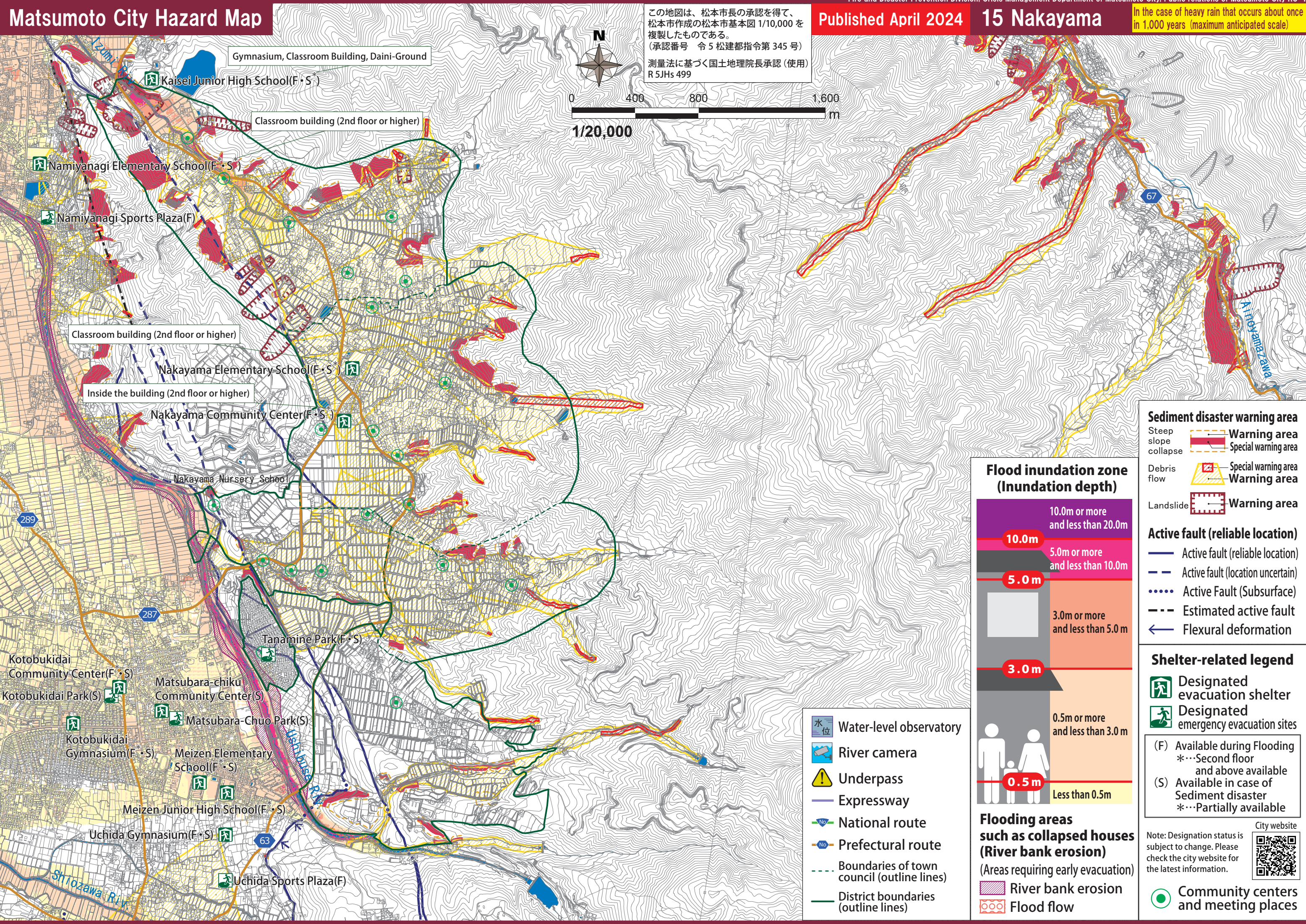
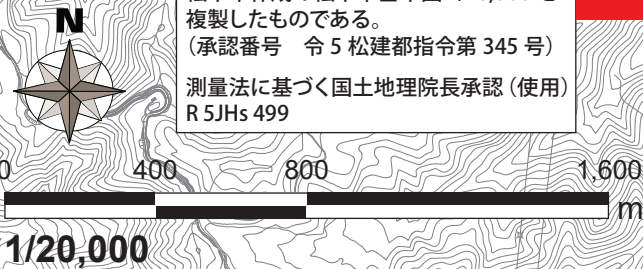
Matsumoto City Hazard Map

Published April 2024

15 Nakayama

In the case of heavy rain that occurs about once in 1,000 years (maximum anticipated scale)

この地図は、松本市長の承認を得て、松本市作成の松本市基本図 1/10,000 を複製したものである。
(承認番号 令5 松建都指令第 345 号)
測量法に基づく国土地理院長承認 (使用) R 5JHs 499



Sediment disaster warning area

- Steep slope collapse
 - Warning area
 - Special warning area
- Debris flow
 - Special warning area
 - Warning area
- Landslide
 - Warning area

Active fault (reliable location)

- Active fault (reliable location)
- Active fault (location uncertain)
- Active Fault (Subsurface)
- Estimated active fault
- Flexural deformation

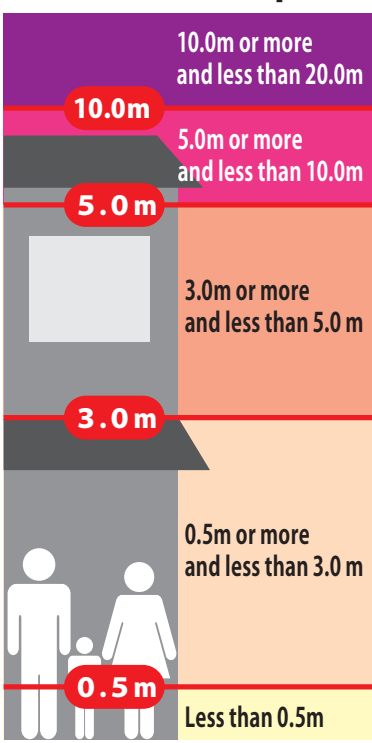
Shelter-related legend

- Designated evacuation shelter
- Designated emergency evacuation sites
- (F) Available during Flooding
 - *...Second floor and above available
- (S) Available in case of Sediment disaster
 - *...Partially available

Note: Designation status is subject to change. Please check the city website for the latest information.

Community centers and meeting places

Flood inundation zone (Inundation depth)



Flooding areas such as collapsed houses (River bank erosion)

- (Areas requiring early evacuation)
- River bank erosion
- Flood flow

- Water-level observatory
- River camera
- Underpass
- Expressway
- National route
- Prefectural route
- Boundaries of town council (outline lines)
- District boundaries (outline lines)