

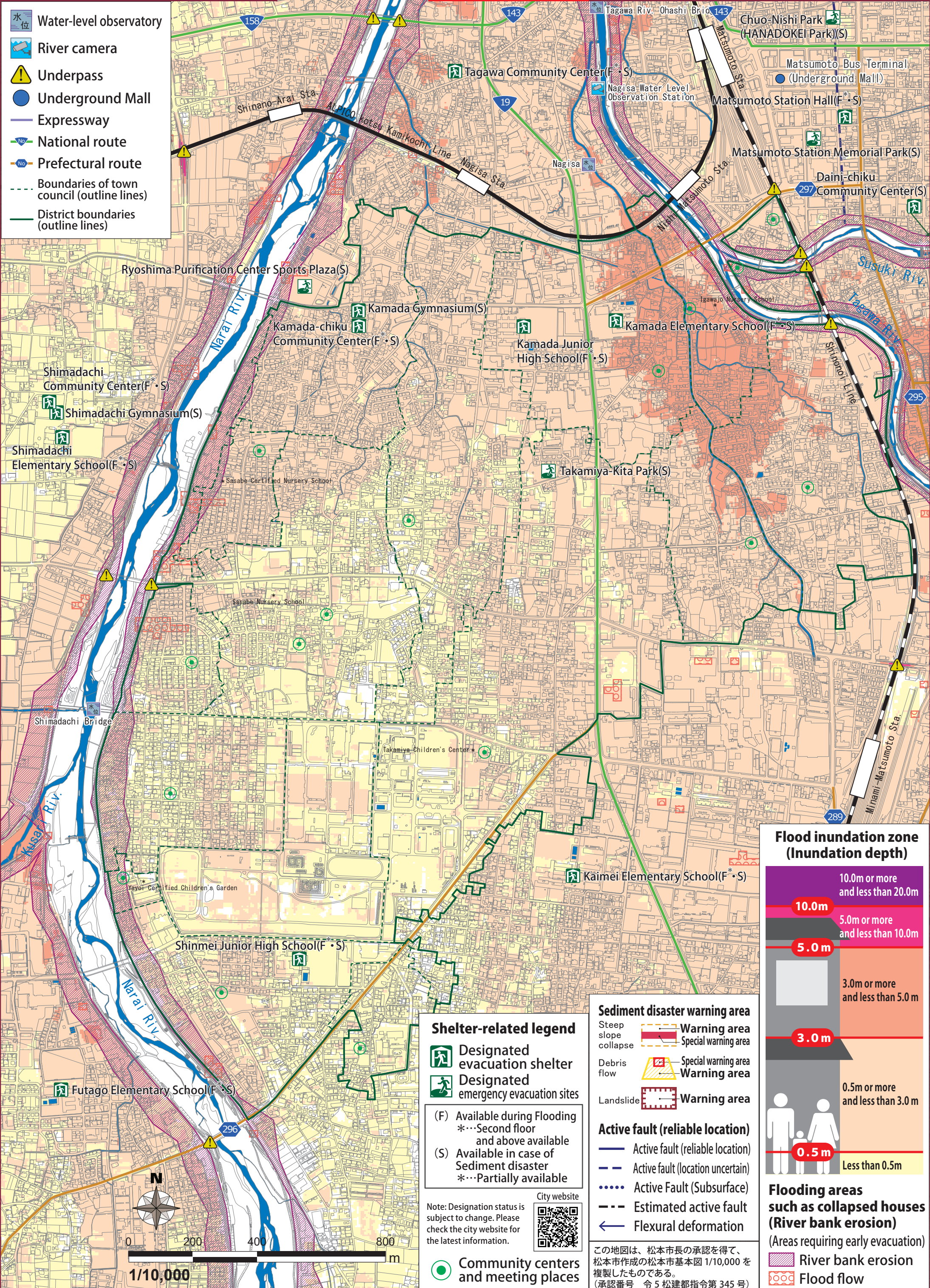
Matsumoto City Hazard Map

Published April 2024

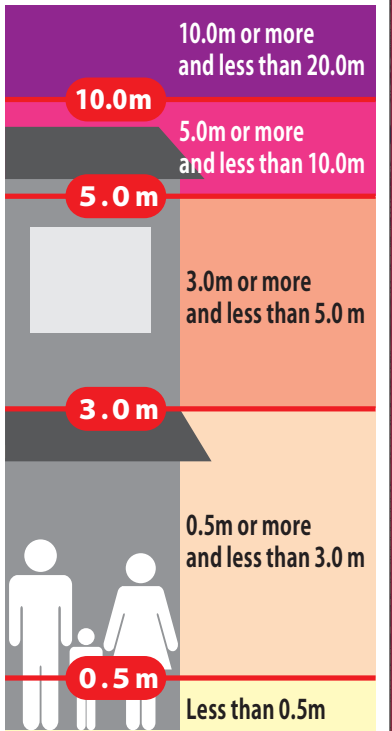
12 Kamada

In the case of heavy rain that occurs about once in 1,000 years (maximum anticipated scale)

- Water-level observatory
- River camera
- Underpass
- Underground Mall
- Expressway
- National route
- Prefectural route
- Boundaries of town council (outline lines)
- District boundaries (outline lines)



Flood inundation zone (Inundation depth)



Shelter-related legend

- Designated evacuation shelter
- Designated emergency evacuation sites
- (F) Available during Flooding
- (S) Available in case of Sediment disaster
- *...Second floor and above available
- *...Partially available

Note: Designation status is subject to change. Please check the city website for the latest information.



Sediment disaster warning area

- Steep slope collapse
- Debris flow
- Landslide
- Warning area
- Special warning area

Active fault (reliable location)

- Active fault (reliable location)
- Active fault (location uncertain)
- Active Fault (Subsurface)
- Estimated active fault
- Flexural deformation

この地図は、松本市長の承認を得て、松本市作成の松本市基本図 1/10,000 を複製したものである。(承認番号 令5 松建都指令第 345 号)

Flooding areas such as collapsed houses (River bank erosion)

- (Areas requiring early evacuation)
- River bank erosion
- Flood flow