

Matsumoto City Hazard Map

Published April 2024 5 Chuo

In the case of heavy rain that occurs about once in 1,000 years (maximum anticipated scale)

Sediment disaster warning area

- Steep slope collapse
 - Warning area
 - Special warning area
- Debris flow
 - Special warning area
 - Warning area
- Landslide
 - Warning area

Active fault (reliable location)

- Active fault (reliable location)
- Active fault (location uncertain)
- Active Fault (Subsurface)
- Estimated active fault
- Flexural deformation

Shelter-related legend

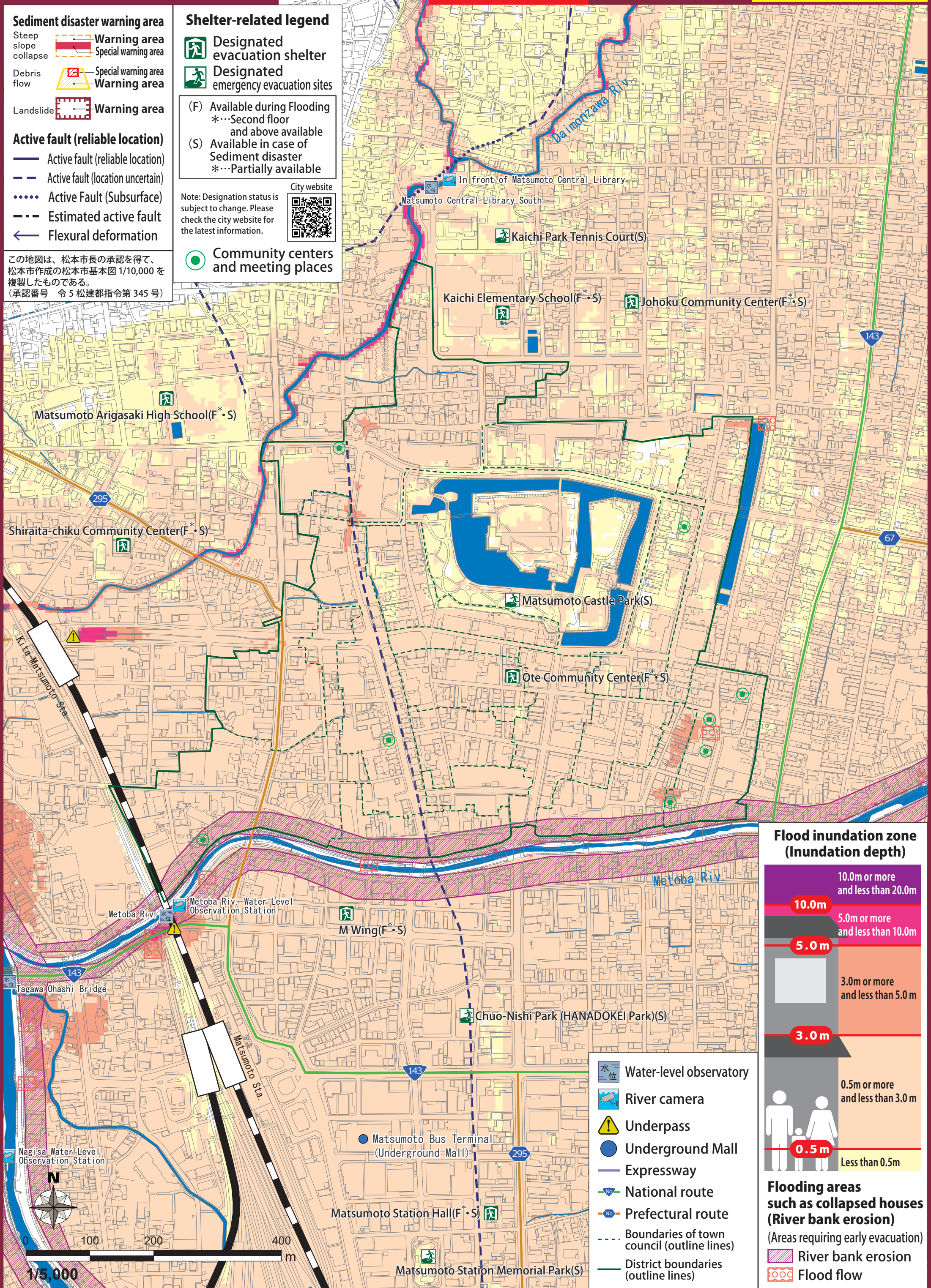
- Designated evacuation shelter
- Designated emergency evacuation sites
- (F) Available during Flooding
 - *...Second floor and above available
- (S) Available in case of Sediment disaster
 - *...Partially available

Note: Designation status is subject to change. Please check the city website for the latest information.

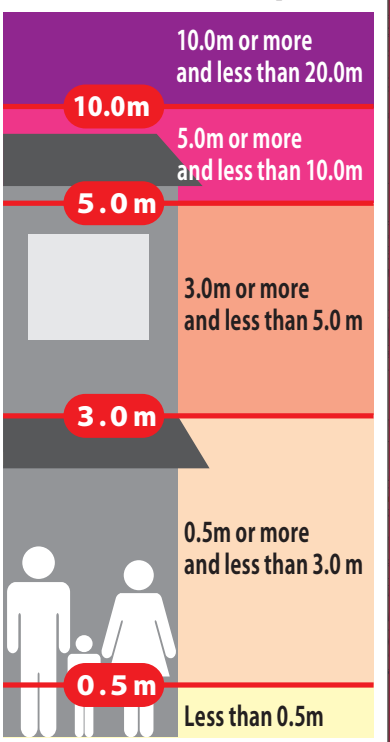


Community centers and meeting places

この地図は、松本市長の承認を得て、松本市作成の松本市基本図 1/10,000 を複製したものである。
(承認番号 令 5 松建都指令第 345 号)



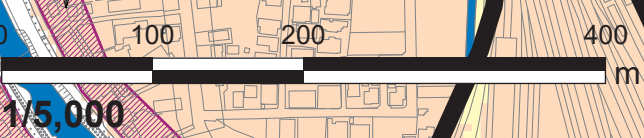
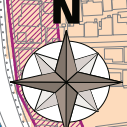
Flood inundation zone (Inundation depth)



Flooding areas such as collapsed houses (River bank erosion)

- (Areas requiring early evacuation)
- River bank erosion
- Flood flow

- Water-level observatory
- River camera
- Underpass
- Underground Mall
- Expressway
- National route
- Prefectural route
- Boundaries of town council (outline lines)
- District boundaries (outline lines)



1/5,000