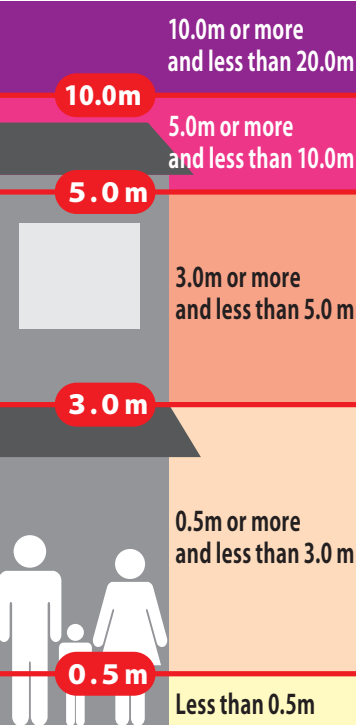


Flood inundation zone (Inundation depth)



Setting of Important Flood Prevention Zones
..... Important Flood Prevention Zones

Shelter-related legend

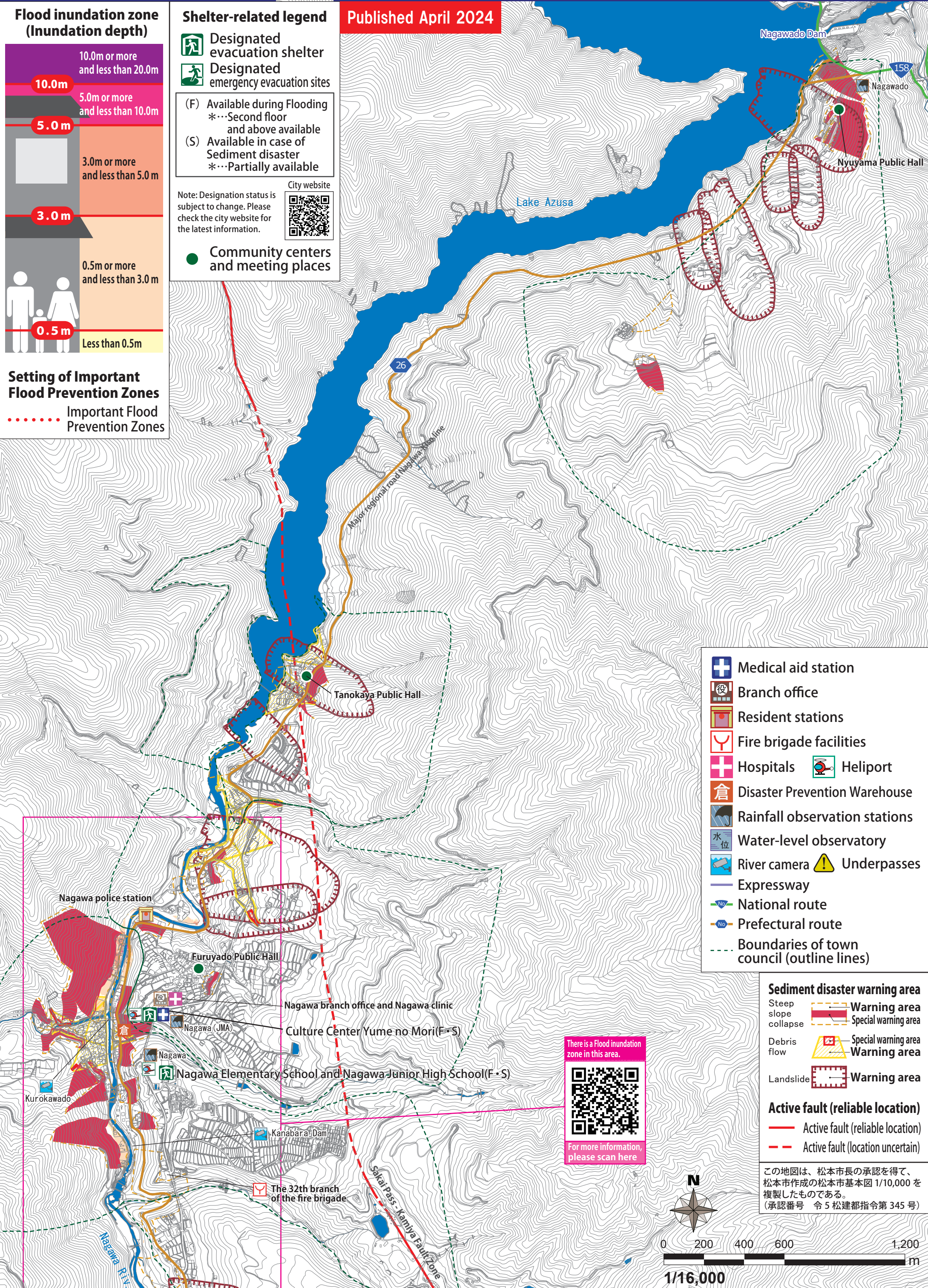


(F) Available during Flooding
*...Second floor and above available
(S) Available in case of Sediment disaster
*...Partially available

Note: Designation status is subject to change. Please check the city website for the latest information.

Community centers and meeting places

Published April 2024



- Medical aid station
- Branch office
- Resident stations
- Fire brigade facilities
- Hospitals
- Disaster Prevention Warehouse
- Rainfall observation stations
- Water-level observatory
- River camera
- Underpasses
- Expressway
- National route
- Prefectural route
- Boundaries of town council (outline lines)

- Sediment disaster warning area
- Steep slope collapse
 - Debris flow
 - Landslide
 - Warning area
 - Special warning area
 - Warning area
- Active fault (reliable location)
- Active fault (reliable location)
 - Active fault (location uncertain)

There is a Flood inundation zone in this area.

For more information, please scan here

この地図は、松本市長の承認を得て、松本市作成の松本市基本図 1/10,000 を複製したものである。
(承認番号 令 5 松建都指令第 345 号)

