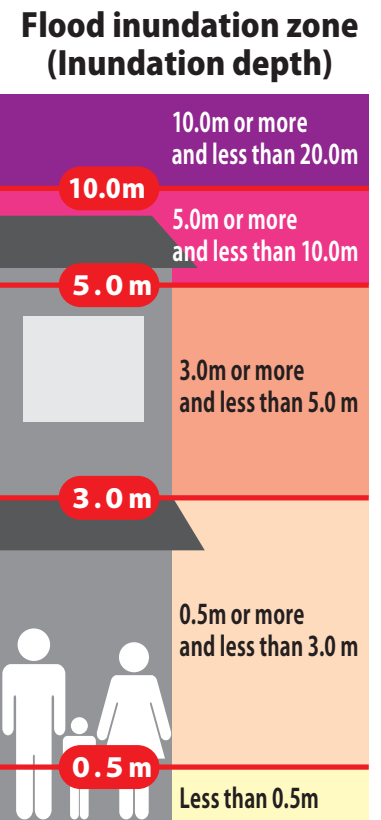


Matsumoto City Hazard Map 48 Nagawa (Hodaira, Kawaura, Kamiya)

In the case of heavy rain that occurs once in 100 years (planned scale)

Published April 2024

Fire and Disaster Prevention Division, Crisis Management Department of Matsumoto City, Public relations of Matsumoto City R6-1



Shelter-related legend

Designated evacuation shelter
 Designated emergency evacuation sites

(F) Available during Flooding
*...Second floor and above available

(S) Available in case of Sediment disaster
*...Partially available

Note: Designation status is subject to change. Please check the city website for the latest information.

City website

Community centers and meeting places

Sediment disaster warning area

Steep slope collapse Warning area
Special warning area

Debris flow Special warning area
Warning area

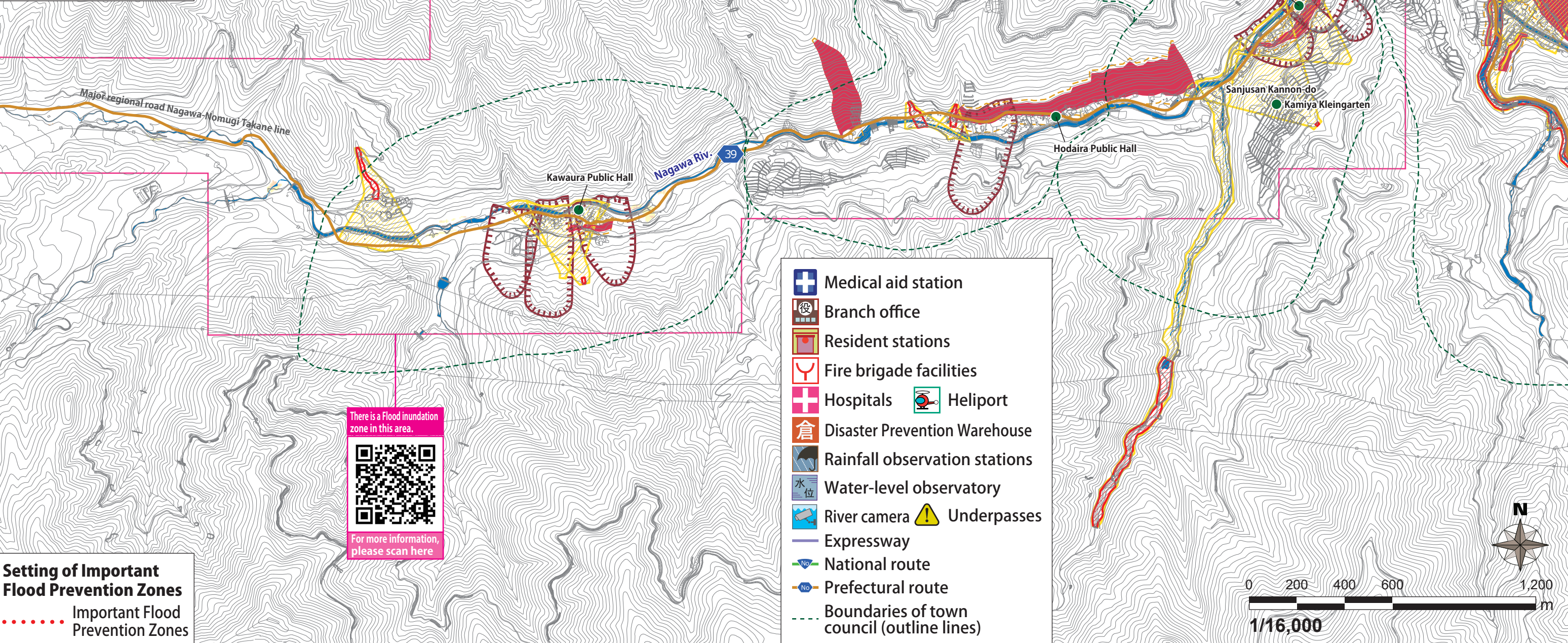
Landslide Warning area

Active fault (reliable location)

Active fault (reliable location)
 Active fault (location uncertain)

この地図は、松本市長の承認を得て、松本市作成の松本市基本図 1/10,000 を複製したものである。
(承認番号 令 5 松建都指令第 345 号)

測量法に基づく国土地理院長承認 (使用) R 5JHs 499



Medical aid station
 Branch office
 Resident stations
 Fire brigade facilities
 Hospitals
 Disaster Prevention Warehouse
 Rainfall observation stations
 Water-level observatory
 River camera
 Underpasses

Expressway
 National route
 Prefectural route
 Boundaries of town council (outline lines)

Heliport

Setting of Important Flood Prevention Zones

Important Flood Prevention Zones

