

# Matsumoto City Hazard Map

Published April 2024 44 Azumi (Sawando)

In the case of heavy rain that occurs once in 100 years (planned scale)

- Medical aid station
- Branch office
- Resident stations
- Fire brigade facilities
- Hospitals
- Heliport
- Rainfall observation stations
- Water-level observatory
- River camera
- Underpasses
- Expressway
- National route
- Prefectural route
- Boundaries of town council (outline lines)

No Flood inundation zone

## Setting of Important Flood Prevention Zones

..... Important Flood Prevention Zones

## Shelter-related legend

- Designated evacuation shelter
- Designated emergency evacuation sites

(S) Available in case of Sediment disaster  
\*...Partially available  
(E) Available in case of Earthquake

Note: Designation status is subject to change. Please check the city website for the latest information.



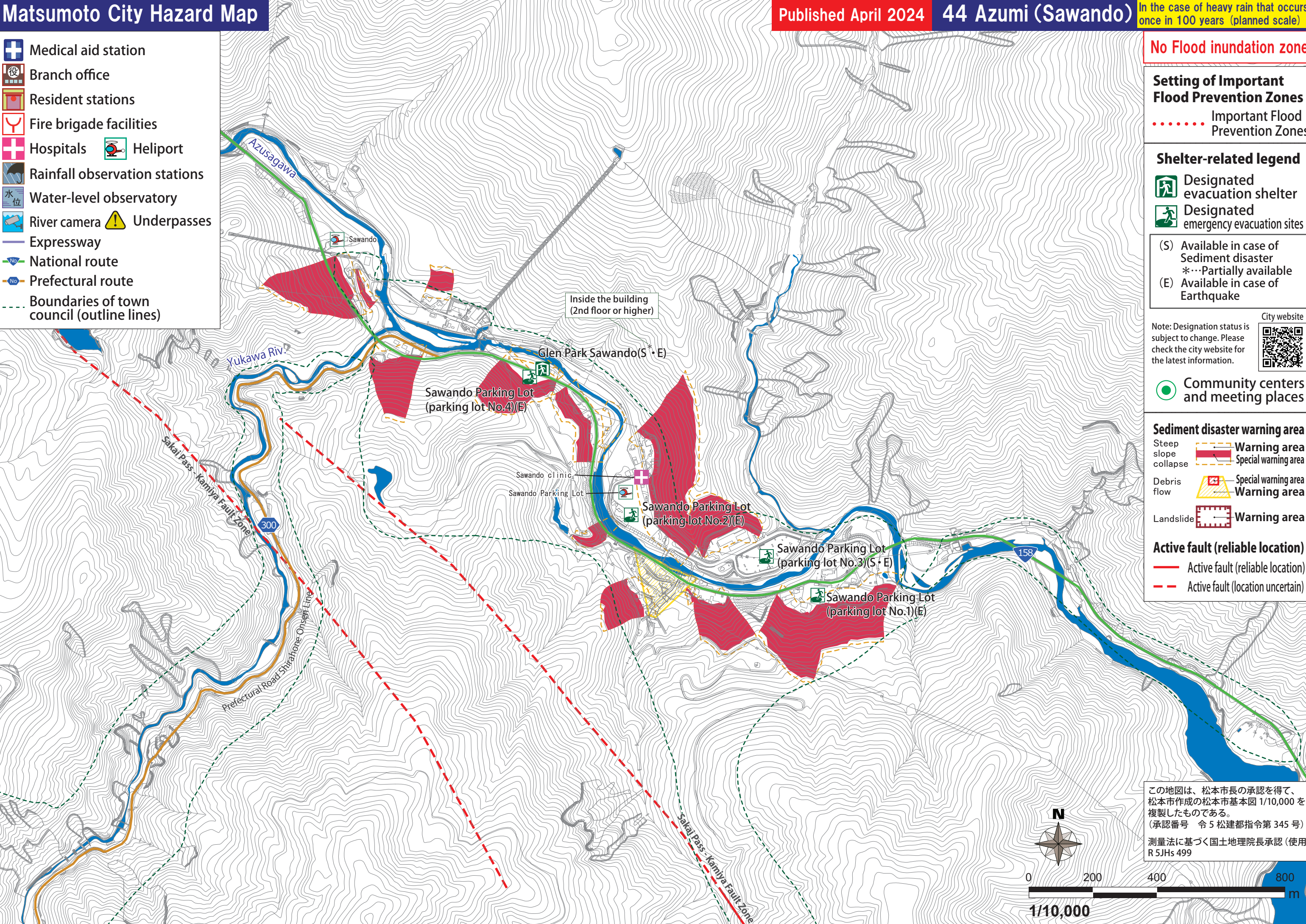
## Community centers and meeting places

## Sediment disaster warning area

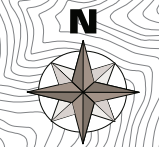
- Steep slope collapse
- Debris flow
- Landslide
- Warning area
- Special warning area
- Warning area

## Active fault (reliable location)

- Active fault (reliable location)
- Active fault (location uncertain)



この地図は、松本市長の承認を得て、松本市作成の松本市基本図 1/10,000 を複製したものである。  
(承認番号 令 5 松建都指令第 345 号)  
測量法に基づく国土地理院長承認 (使用 R 5JHs 499)



0 200 400 800 m

1/10,000