

Matsumoto City Hazard Map

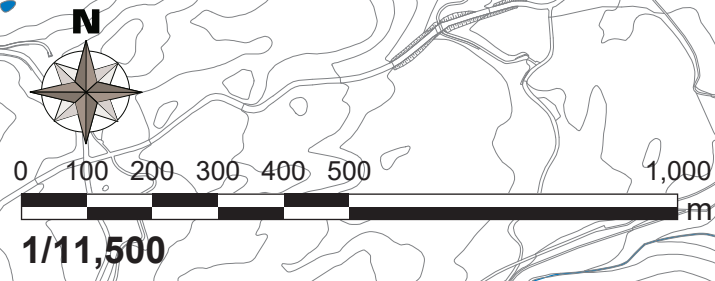
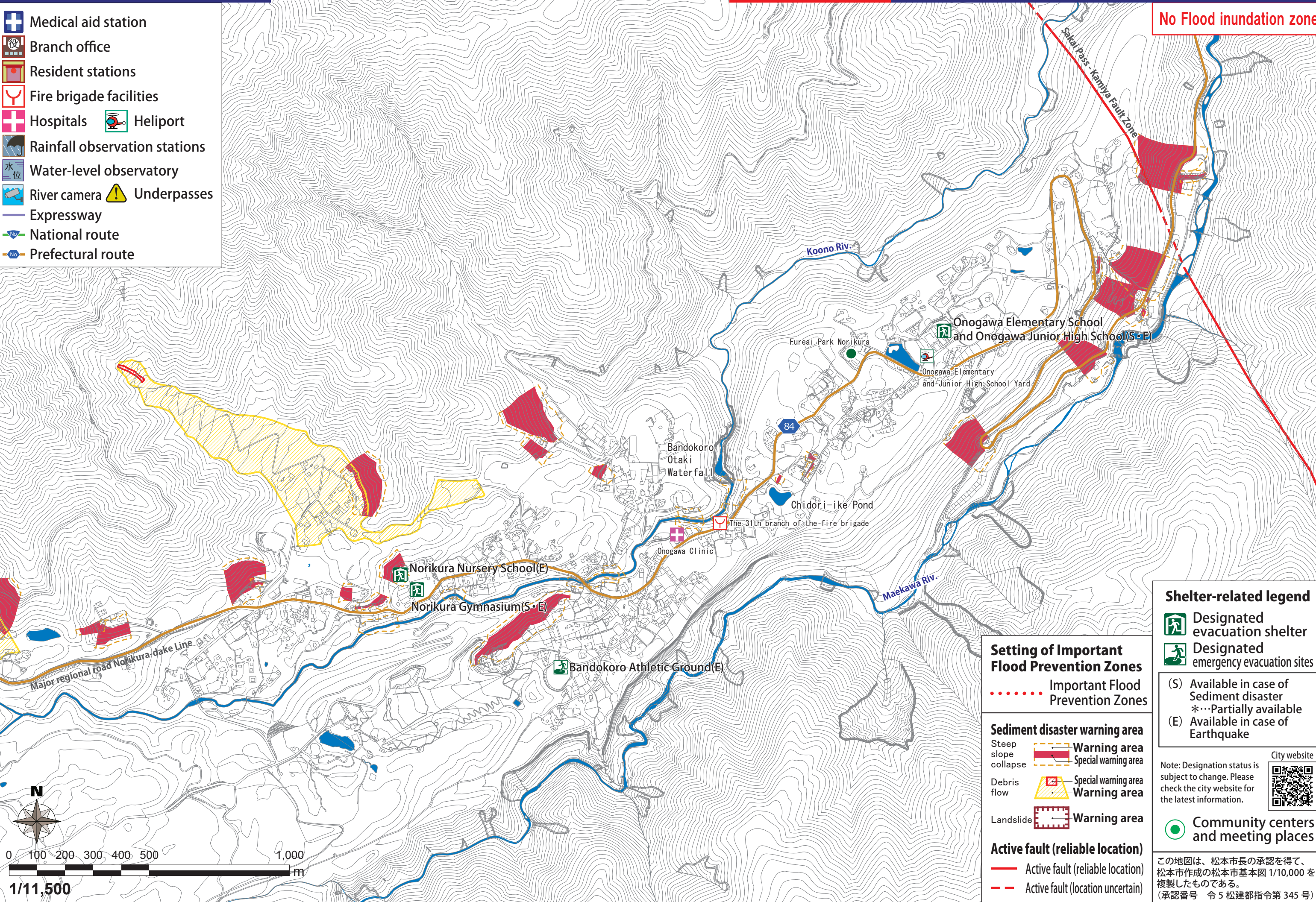
Published April 2024

41 Azumi (Onogawa1)

In the case of heavy rain that occurs once in 100 years (planned scale)

- Medical aid station
- Branch office
- Resident stations
- Fire brigade facilities
- Hospitals
- Heliport
- Rainfall observation stations
- Water-level observatory
- River camera
- Underpasses
- Expressway
- National route
- Prefectural route

No Flood inundation zone



Setting of Important Flood Prevention Zones

..... Important Flood Prevention Zones

Sediment disaster warning area

Steep slope collapse Warning area

Debris flow Special warning area

Landslide Warning area

Active fault (reliable location)

— Active fault (reliable location)

- - Active fault (location uncertain)

Shelter-related legend

Designated evacuation shelter

Designated emergency evacuation sites

(S) Available in case of Sediment disaster

*...Partially available

(E) Available in case of Earthquake

Community centers and meeting places

Note: Designation status is subject to change. Please check the city website for the latest information.

City website

この地図は、松本市長の承認を得て、松本市作成の松本市基本図 1/10,000 を複製したものである。(承認番号 令 5 松建都指令第 345 号)