

Matsumoto City Hazard Map

Published April 2024

40 Azumi (Inekoki)

In the case of heavy rain that occurs once in 100 years (planned scale)

No Flood inundation zone


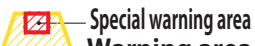

Details of the area①

この地図は、松本市長の承認を得て、松本市作成の松本市基本図 1/10,000 を複製したものである。
(承認番号 令 5 松建都指令第 345 号)

Setting of Important Flood Prevention Zones

..... Important Flood Prevention Zones

Sediment disaster warning area

- Steep slope collapse  Warning area
- Debris flow  Special warning area
- Landslide  Warning area

Details②

Shelter-related legend

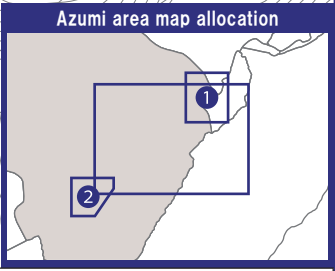
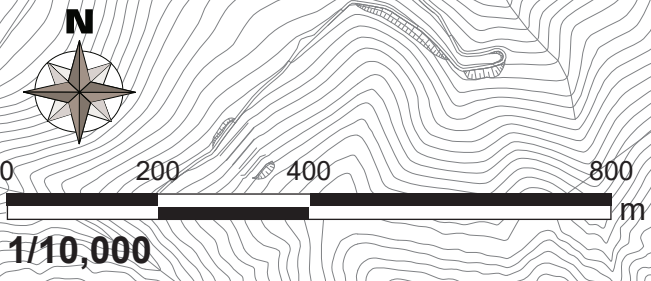
-  Designated evacuation shelter
-  Designated emergency evacuation sites

- (S) Available in case of Sediment disaster
- *...Partially available
- (E) Available in case of Earthquake

Note: Designation status is subject to change. Please check the city website for the latest information.

Community centers and meeting places

Details of the area②



-  Medical aid station
-  Branch office
-  Resident stations
-  Fire brigade facilities
-  Hospitals
-  Heliport
-  Rainfall observation stations
-  Water-level observatory
-  River camera
-  Underpasses
-  Expressway
-  National route
-  Prefectural route
-  District boundaries (outline lines)

Details①

