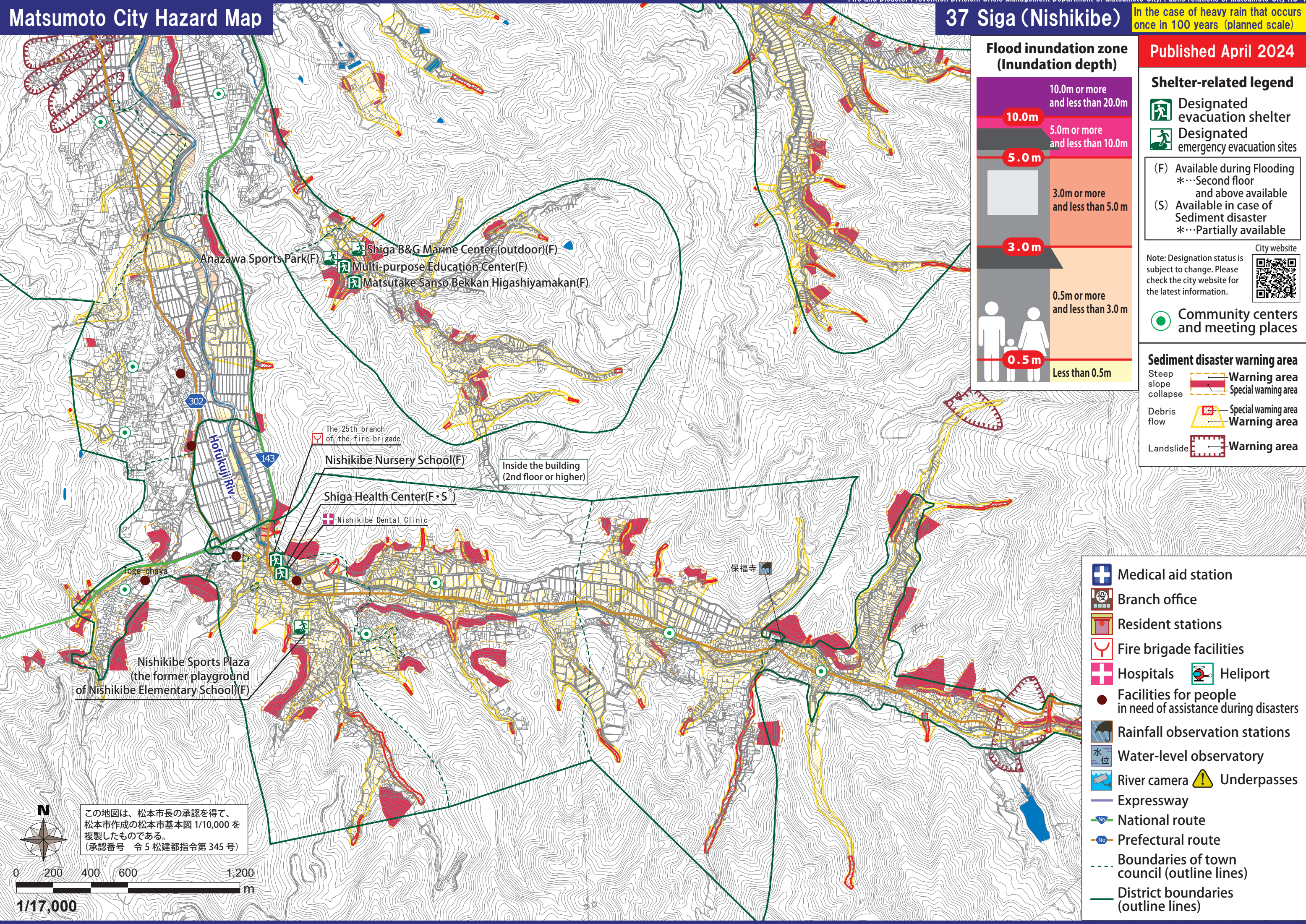


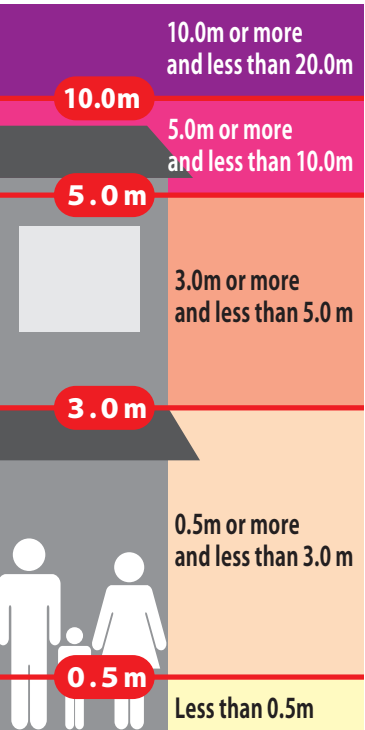
Matsumoto City Hazard Map

37 Siga (Nishikibe)

In the case of heavy rain that occurs once in 100 years (planned scale)



Flood inundation zone (Inundation depth)



Published April 2024

Shelter-related legend

- Designated evacuation shelter
- Designated emergency evacuation sites

(F) Available during Flooding
*...Second floor and above available
(S) Available in case of Sediment disaster
*...Partially available

Note: Designation status is subject to change. Please check the city website for the latest information.



Community centers and meeting places

Sediment disaster warning area

- Steep slope collapse Warning area
- Debris flow Special warning area
- Landslide Warning area

- Medical aid station
- Branch office
- Resident stations
- Fire brigade facilities
- Hospitals
- Heliport
- Facilities for people in need of assistance during disasters
- Rainfall observation stations
- Water-level observatory
- River camera
- Underpasses
- Expressway
- National route
- Prefectural route
- Boundaries of town council (outline lines)
- District boundaries (outline lines)

この地図は、松本市長の承認を得て、松本市作成の松本市基本図 1/10,000 を複製したものである。
(承認番号 令5 松建都指令第 345 号)

