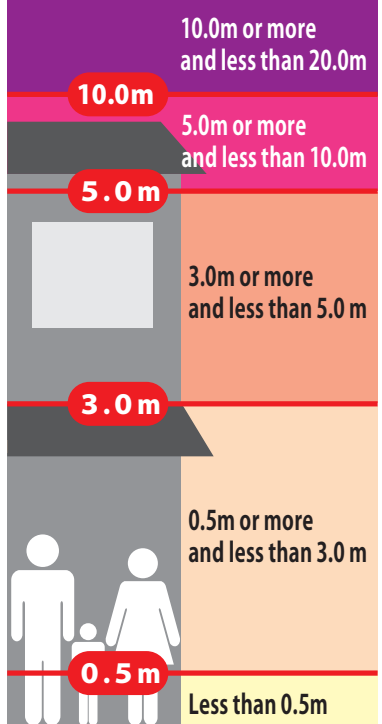


Matsumoto City Hazard Map 32 Hongo 2

In the case of heavy rain that occurs once in 100 years (planned scale)

Published April 2024

Flood inundation zone (Inundation depth)



Sediment disaster warning area

- Steep slope collapse: Warning area (Red outline), Special warning area (Red fill)
- Debris flow: Warning area (Yellow outline), Special warning area (Yellow fill)
- Landslide: Warning area (Red outline)

Active fault (reliable location)

- Active fault (reliable location) (Solid blue line)
- Active fault (location uncertain) (Dashed blue line)
- Active Fault (Subsurface) (Dotted blue line)
- Estimated active fault (Long dashed blue line)
- Flexural deformation (Blue arrow)

- Water-level observatory (Blue square with '水' and '位')
- River camera (Blue square with camera icon)
- Underpass (Yellow triangle with exclamation mark)
- Expressway (Thick purple line)
- National route (Blue line with 'No' and number)
- Prefectural route (Orange line with 'No' and number)
- Boundaries of town council (outline lines) (Dashed green line)
- District boundaries (outline lines) (Solid green line)

Shelter-related legend

- Designated evacuation shelter (Green square with person icon)
- Designated emergency evacuation sites (Green square with person icon)
- (F) Available during Flooding
 - *...Second floor and above available
- (S) Available in case of Sediment disaster
 - *...Partially available

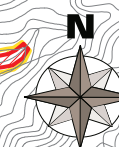
Note: Designation status is subject to change. Please check the city website for the latest information.

City website



Community centers and meeting places (Green circle with person icon)

この地図は、松本市長の承認を得て、松本市作成の松本市基本図 1/10,000 を複製したものである。
(承認番号 令5 松建都指令第 345 号)



1/15,000