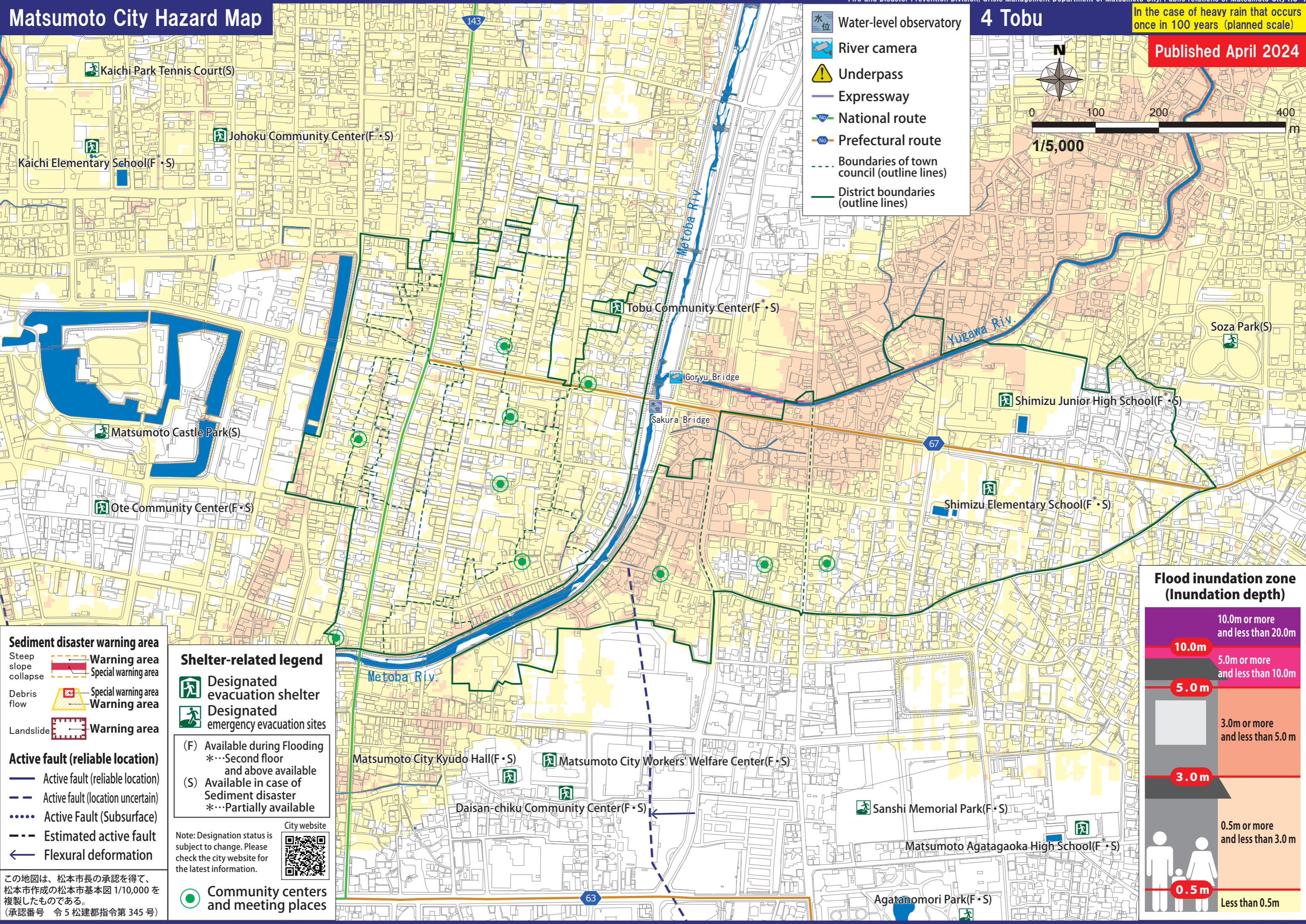


# Matsumoto City Hazard Map

Published April 2024



**Sediment disaster warning area**  
Steep slope collapse  
Debris flow  
Landslide

**Warning area**  
Special warning area  
Warning area  
Warning area

**Active fault (reliable location)**  
Active fault (reliable location)  
Active fault (location uncertain)  
Active Fault (Subsurface)  
Estimated active fault  
Flexural deformation

この地図は、松本市長の承認を得て、松本市作成の松本市基本図 1/10,000 を複製したものである。  
(承認番号 令 5 松建都指令第 345 号)

**Shelter-related legend**  
Designated evacuation shelter  
Designated emergency evacuation sites

(F) Available during Flooding  
\*...Second floor and above available  
(S) Available in case of Sediment disaster  
\*...Partially available

Note: Designation status is subject to change. Please check the city website for the latest information.

**Community centers and meeting places**

## Flood inundation zone (Inundation depth)

