

Matsumoto City Hazard Map (Disaster Prevention Map)

Let's check the hazard map.



In case of a disaster, please use this hazard map to discuss and confirm with your family and community on a daily basis such as dangerous places around your home, evacuation areas, evacuation routes, evacuation tips, and disaster preparedness.

The city is based on the evacuation system based on the assumption of the planned scale of flood. However, depending on the rainfall situation, the city may shift to the evacuation system for the assumed maximum scale of flood. Please pay careful attention to the information on the hazard map.

<< Inquiry >> Fire and Disaster Prevention Division, Crisis Management Department, Matsumoto City

Zip code 390 -8620 3-7 Marunouchi, Matsumoto-city, Nagano
Phone: 0263-33-1191 (direct line) 0263-35-3000 (the main switchboard number) FAX:0263-33-1011

Utilization of Matsumoto City Hazard Map (Disaster Prevention Map)

Step. 1 Locate your house on the map.

Step. 2 Check the evacuation area just in case.

Step. 3 Consider the evacuation route.

Step. 4 Understand how to evacuate safely and securely.

Step. 5 Collect information

Evacuation actions at alert levels

Step. 4

Alert level	What you should do	Evacuation information, etc.	< Announcement by JMA* >
Alert Level 5	Occurrence of a disaster or imminent danger Ensuring safety immediately and in danger of life	Emergency safety assurance Emergency safety assurance Issued when a disaster is actually occurring, to the extent possible. Issued by the city.	Flood occurrence information Special heavy rain warnings, etc.
Alert Level 4	Be at high risk of disaster Evacuate everyone from a dangerous place	Evacuation order Emergency issuance depending on local conditions. Issued by the city.	Flood hazard information Sediment disaster warning information
Alert Level 3	Risk of disasters Evacuation of elderly people from dangerous places	Evacuation of the elderly, etc. Issued by the city.	Flood warning information Flood warning Heavy rain warnings, etc.
Alert Level 2	confirm one's own evacuation	Flood advisory Heavy rain advisory, etc. < Announcement by JMA* >	Flood advisory Heavy rain advisory, etc.
Alert Level 1	enhance disaster preparedness	Early warning information < Announcement by JMA* >	Early warning information

[Note] Information is not always published in order of alert level 1 ~ 5. The situation may change suddenly.
* JMA means the Japanese Meteorological Agency

Precautions for Wind and Flood Damage

Please pay attention to the following points when evacuating during heavy rain.

Rubber boots are hard to walk in. Weary, hard-soled shoes are good.

Watch out for underwater manholes and ditches!

Families are connected by ropes to evacuate. (or holding hands)

If you are late to escape, evacuate to a strong tall building!

How to gather information

In the event of a disaster, it is important to collect accurate information quickly in order to save lives. Let's try to collect information by using the Internet as well as TV and radio. Also, **you should always check where and what information is available.**

Matsumoto Anshin Net (mail delivery service)

The city delivers weather information, fire information, evacuation information, establishment of evacuation centers, and notifications from the city via e-mail to the mobile phones and PCs of **registered people**.

Pre-registration is required!



Disaster Prevention Administration Radio and Telephone Service

Through outdoor speakers, we provide information on emergencies and disasters to the public. [If you miss the broadcast, if you can't hear it clearly] You can check the contents with the telephone service.

※Only broadcast within the last 48 hours.

0120-07-8686 Free call charge

0263-36-8686 Call charges apply

Disaster telephone service

"Information on Evacuation and Shelters" and "National Protection Information" will be sent to landlines or faxes of **people who do not have mobile phones or smartphones.**

◆ Inquiry ◆
Fire and Disaster Prevention Division,
Crisis Management Department
Phone 33 -1191
Fax 33 -1011

TV
data broadcasting

Radio

Action against floods guidelines for actions in an emergency

Inundation assumed depth	Need for evacuation	Guideline for Action
10.0m or more and less than 20.0 m	Early evacuation is necessary	Staying at home is dangerous! If evacuation is delayed, it is advisable to evacuate to a nearby high-rise building.
5.0m or more and less than 10.0 m		
3.0m or more and less than 5.0 m	Evacuation may be required	If the evacuation is delayed, it may be better to evacuate to a nearby building of three stories or more.
0.5m or more and less than 3.0 m		If evacuation is delayed, for example, it is advisable to shelter in a building above the second floor of your home or neighborhood.
Less than 0.5m	There are few cases where evacuation is necessary	Staying at home is likely to be safer. But you need to be prepared just in case.
Not Assumed		

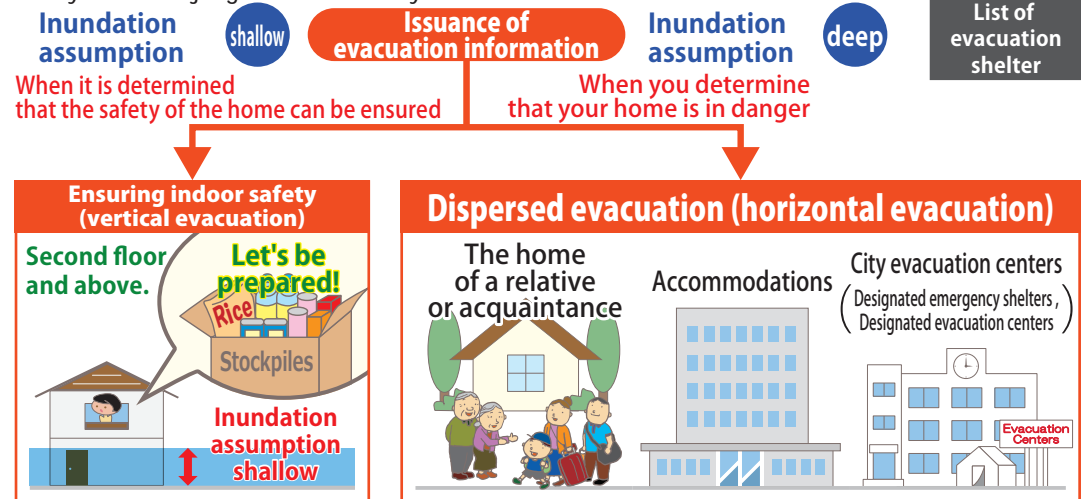
Actions against sediment disasters guidelines for actions in an emergency

Classification	Need for evacuation	Guideline for Action
Sediment disaster warning area (Yellow Zone)	Evacuation may be required	If the timing of evacuation is delayed, it may be better to evacuate to your home or a building on the second floor or higher next to you. In this case, it is important to avoid rooms on the mountain side and stay away from windows (there is a small chance that a typical building will be destroyed).
Sediment disaster special warning area (Red Zone)	Early evacuation is necessary	Staying at home is dangerous! Evacuate to a shelter or to a nearby safe building.

Dispersion Evacuation

Step. 2 ~ 3

In order to avoid confusion in the city's evacuation centers (designated emergency evacuation centers and designated evacuation centers), we should consider decentralized evacuation outside of the city's evacuation centers, such as the safe homes of relatives and acquaintances, and accommodation facilities (hotels and ryokan). We should also consider decentralized evacuation by ensuring indoor safety when we judge that the safety of our homes can be secured.



Refer to hazard maps and consider what to do in case of flooding.

Check the situation near your home on the hazard map and think about what you should do in an emergency. However,

- Inundation assumed area and sediment disaster warning area are calculated scenarios created based on one assumption.
- Natural disasters don't always happen as expected.
- It is necessary to pay attention to weather information, evacuation information, and the surrounding situation, and to cooperate with your family and neighbors in an ad hoc manner. The action in an emergency depends on the situation of rain and wind, the time of day, and the situation of the water level of the river. Let's improve our ability to respond in an emergency by discussing with family and community while considering various assumptions.

Information distribution service

The city also distributes disaster information and the establishment of evacuation centers on SNS.

Matsumoto City (official) X (Former Twitter)

Matsumoto City (official) Facebook

Matsumoto City (official) LINE



Internet

Disaster information in Nagano Prefecture



Disaster prevention information in Matsumoto City

• Weather information • river cameras
• Water level information
• lifeline, etc.



Emergency Contact



Fire and Emergency

119



Incidents and Accidents

110

How to **register** messages (Disaster Emergency Message Dial "171"/web "171")

Phone	Dial 171	Dial "1" Dial "3" to use your PIN.	(Area code) + Phone number	Record a Message
Web	Access web171.jp	Enter phone number	Register button	Name/Safety/Message Register

How to **check** messages (Disaster Emergency Message Dial "171"/web "171")

Phone	Dial 171	Dial "2" Dial "4" to use your PIN.	(Area code) + Phone number	Play the message
Web	Access web171.jp	Enter phone number	confirm button	Play Name/Safety/Message

Medical Aid Station

When a large-scale disaster (an earthquake with a seismic intensity of 6 lower or higher, etc.) occurs, medical aid stations are opened. If you feel sick, please go to the nearest medical aid station.



Disaster Garbage

The way to take out the garbage generated by the disaster is different from the usual garbage. Let's take it out to the temporary place where there is a guide after the disaster.



Facilities For Persons Requiring Special Consideration

Owners and managers of facilities for persons requiring special attention located in the inundation assumed area and the sediment disaster warning area specified in the Matsumoto City Regional Disaster Prevention Plan are requested to prepare an evacuation security plan and conduct training.



Estimated Rainfall

Estimated Rainfall (Planned scale ・ Assumed maximum scale)			[Reference] Precipitation in Matsumoto so far		
River name	Planned scale rainfall in 100	Estimated maximum rainfall in 1000		hourly precipitation	24 hour precipitation
Azusa Riv.	186mm (2 days)	396mm (2 days)	1st place	59.0mm 1981/7/18	172.0mm 2006/7/18
Narai Riv.	235mm (2 days)	707mm (2 days)	2nd place	55.2mm 1947/8/28	168.0mm 2021/8/14
Aida Riv. / Houfukuji Riv.	270mm (24hours)	753mm (24hours)	3rd place	51.5mm 2008/8/4 1947/8/27	158.5mm 1983/9/28
Mizukamizawa Riv.	130mm (24hours)	753mm (24hours)			
Daimonzawa Riv. / Nishi-daimonzawa Riv. / Yugawa Riv. / Izumi Riv. / Ushibuse Riv. / Shiozawa Riv. / Karasawa Riv.	90mm (24hours)	813mm (24hours)			
Kosobu Riv.	164mm (24hours)	813mm (24hours)			
Nagawa Riv.	239mm (24hours)	739mm (24hours)			
Honsawa Riv.	—	813mm (24hours)			
Mimasawa Riv.	162mm (24hours)	813mm (24hours)			
Kusari Riv.	164mm (24hours)	725mm (24hours)			

[Notes] The probability of heavy rain (planned scale) occurring about 1 time in 100 is the same as the conventional hazard map, but it has been revised due to river improvement and improvement of calculation accuracy of the inundation assumption.



Flooding areas such as collapsed houses

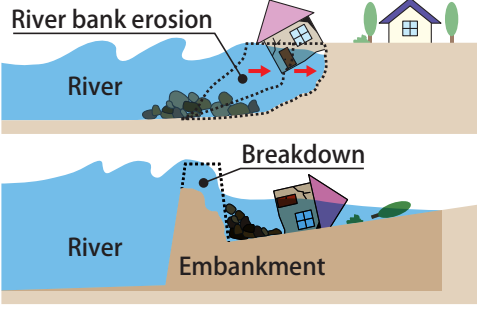
The following are the areas where flooding is expected to occur that could result in the collapse or loss of homes. In these areas, please evacuate as soon as possible.

River bank erosion

Areas where there is a risk of houses being washed away or collapsed due to riverbank erosion during floods

Flood flow

Areas where there is a risk of wooden houses being washed away or collapsed due to floods flow

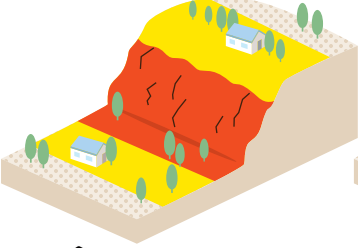


Type of sediment disaster ・ Sediment disaster warning area

In accordance with the Sediment Disaster Prevention Law, Nagano Prefecture has designated areas where there is a risk of harm to the lives or bodies of residents when a sediment disaster occurs.

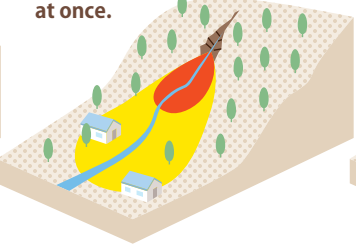
Steep slope collapse

It is a phenomenon that a steep slope suddenly collapses due to heavy rain or an earthquake.



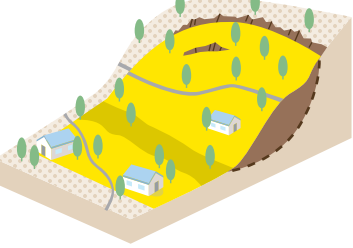
Debris flow

It is a phenomenon that soil and stones on the ground of valleys and mountains are washed away with water all at once.



Landslide

It is a phenomenon that a gentle slope slides down over a wide area.



- Sediment disaster warning area
Areas at Risk of Sediment Disasters (Yellow Zone)
- Sediment disaster special warning area
Areas within the sediment disaster warning area where damage to buildings is likely to occur and significant harm to residents is likely to occur (Red Zone)

Underpass

This area is lower than the surrounding ground and may be flooded during torrential rains. Do not use the site when it is flooded. Please check the detour route in case of emergency.



Underground Mall (Basement Level)

If water flows into the basement, evacuation becomes difficult and extremely dangerous. Do not use the site during heavy rain. It is difficult to receive information from the ground and it is easy to delay judgment of the situation. If the power goes out due to flooding, it will be difficult to see what is going on inside the room.



Stockpiles and emergency supplies

Learning from the Noto Peninsula Earthquake

In the event of a disaster, electricity, gas, water, communications, and other services may be cut off, and toilets may not be available. In the Noto Peninsula Earthquake of 2024, which struck on January 1, there were cases where supplies were not delivered for a long period of time due to road disruptions. Please make efforts to prepare stockpiles and emergency supplies from normal times so that you can live on your own.

Stockpiles (Things to Prepare for Home)

Stockpiles support the days following a disaster. If possible, prepare "more than a week's worth" for each family's situation.

Stockpiled food	Daily necessities	□Toothbrush (cup)	□Newspaper
□Drinking water	□Polytarp	□First aid kit	Clothing
□Alpha rice	□Cassette stove, cylinder	□Flashlight	□Jacket and winter clothes
□Canned food	□Plastic wrap, aluminum foil	□Toilet paper	□Underwear and socks
□Retort food	□Tableware (Disposable)	□Simple toilet	□Sleeping bag and heat retaining sheet
□Instant food	□Towels and blankets	□Portable toilet	Other
□Candy and other sweet foods	□Soap and antiseptic solution	□Rope	□What you need for personal circumstances

Emergency items (Items to be Taken When Evacuating)

You should put emergency items in a place where you can take them out immediately in an emergency. If it's too heavy, it will prevent you from evacuating, so please put the minimum things in a backpack with both hands free.

Stockpiled food	□Mobile battery	□Gloves	□Bandage
□Drinking water	□Whistle	Medical products	Valuables
□Emergency food	□Plastic bag	□Medications and regular medicines you are taking	□Driver's license (copy allowed)
Daily necessities	□Towel	□Medicine notebook	□Health insurance card (copy allowed)
□Portable radio	□Wet towel	□Mask	Other
□Flashlight(Headlights)	□Portable warmer	□Antiseptic solution	□What you need for personal circumstances
□Spare battery	□Portable toilet	□Thermometer	
□Mobile phones and chargers	□tissue paper	□Adhesive plaster	

Rolling stock is also recommended for food stockpiling!

Buying a little more food and other daily necessities (for example, food, batteries, and household medicines) can help you prepare for disasters. Keep in mind that you'll use the old ones first, and then buy as many as you use.

Earthquake Preparedness

Probability of earthquake

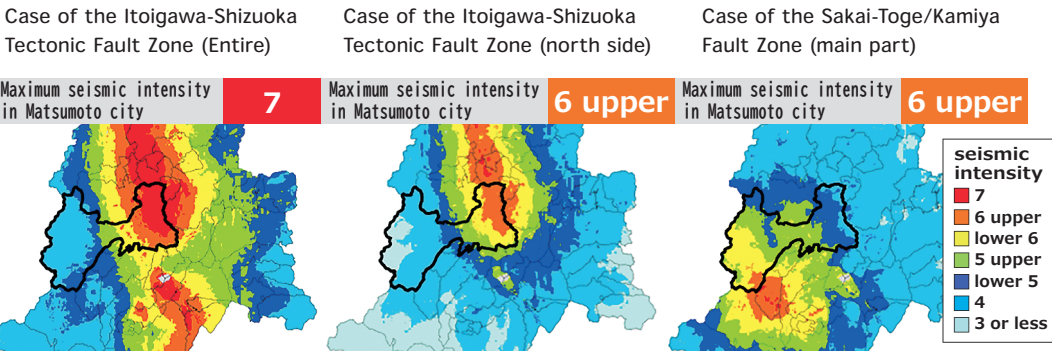
Prepared based on "Long-term evaluation of the Itoigawa-Shizuoka tectonic line fault zone (2nd edition)" and "Evaluation of the Sakai-toge/Kamiya fault zone (partially revised)" (Headquarters for Earthquake Research Promotion)

The Itoigawa-Shizuoka Tectonic Line Fault Zone and the Sakai-toge/Kamiya Fault Zone run through Matsumoto City, which is located at the boundary of the continental plate. The probability of earthquake occurrence has been evaluated as follows.

Fault zone name	Seismic scale	probability of occurrence		
		Within 30 years	Within 50 years	Within 100 years
Itoigawa-Shizuoka Tectonic Line Fault Zone (north-central part)	Magnitude 7.6 approx.	14 ~ 30%	20 ~ 50%	40 ~ 70%
Sakai Pass/Kamiya Fault Zone (main part)	Magnitude 7.6 approx.	0.02 ~ 13%	0.04 ~ 20%	0.09 ~ 40%

Seismic intensity prediction

Prepared based on the 3rd Nagano Prefecture Earthquake Damage Assumption Survey (March 2015)



Safety check inside the house

Check the safety of your house and take measures to prepare for earthquakes.

Let's put anti-scattering film on the glass.

For a hanging light, wrap the socket part with tape and fix it.

Furniture should be properly secured using the appropriate fixtures for the location.

Let's have a flame-proof curtain.

Let's fix the refrigerator using metal fittings so that it doesn't fall over.

For two-tiered furniture, the joints should be securely connected with metal fittings.

Besides this--
●Do not place objects that can topple or fall over in the sleeping area.
●Do not leave luggage in doorways or passageways

Around the house, too--
●Reinforcement of antennas and roof tiles
●Fixing gas cylinders with chains
●Reinforcing block walls and gateposts
●Repair of cracks and rebar rust

To prevent a gap from forming between the furniture and a wall or column, insert a board or something under the furniture and fix it so that you can lean against it.

Stoves should be equipped with an automatic fire extinguishing function. Avoid placing flammable items around them.

Let's fix the TV with a device so that it doesn't fall over.

